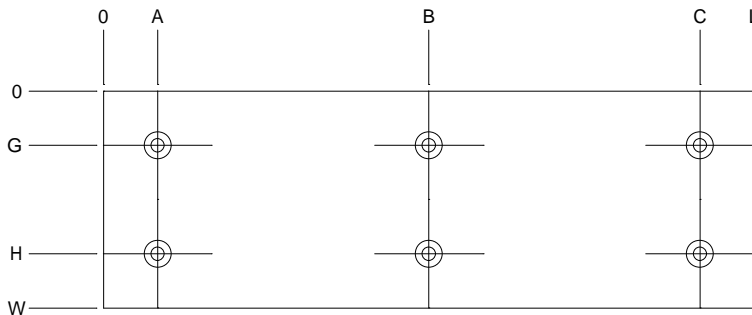
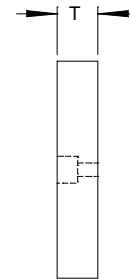
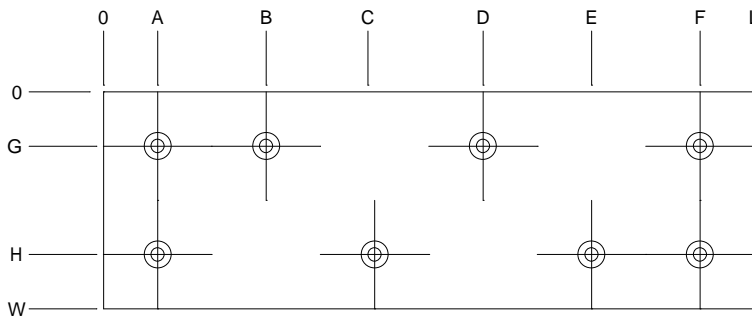


"A" PATTERN



"B" PATTERN



"C" PATTERN

Thickness	Mounting Screw
1/4	1/4 FHCS
3/8*	1/4 SHCS
1/2	5/16 SHCS
5/8	5/16 SHCS

\* minimum thickness for Steel

**Tolerances:** Thickness: +/- .001; Hole Positions: +/- .005; All Other: +/- .010

**Material:** Aluminum Bronze; A2 or 4140 Rc 50-54

**Custom Sizes Are Available!**

Available in both Solid Aluminum Bronze and Steel in a variety of standard thicknesses, widths and lengths; with or without mounting holes; with graphite plugs, grease grooves or plain.\*

\* Graphite Plugs and no mounting holes are available only in aluminum bronze

## Wear Strips - Inch

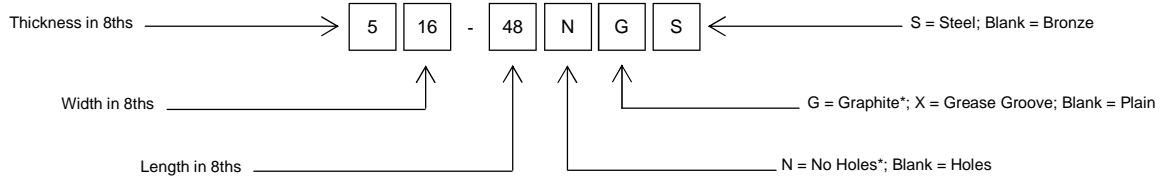
Aluminum Bronze, Steel; with Graphite, Grease Grooves or plain

www.selflube.com

fax: 616.837.6573

email: info@selflube.com

call: 616.837.9721



\* Aluminum Bronze only.

**Size Range:** Thickness: 0.250 - 0.625  
 Width: 1.0 - 8.0\*  
 Length: 2.0 - 36

\*For 0.250 thickness, maximum width is 6 without graphite; 4 with graphite.

Thk T	Width W	Length L	Holes		Hole Position							
			Amt	Pattern	A	B	C	D	E	F	G	H
1/4** 3/8"	1.00	4.00	2	A	1.00	3.00					.50	
		5.00	3	A	.50	2.50	4.50				.50	
		6.00	3	A	1.00	3.00	5.00				.50	
		8.00	4	A	1.00	3.00	5.00	7.00			.50	
		10.00	5	A	1.00	3.00	5.00	7.00	9.00		.50	
		12.00	6	A	1.00	3.00	5.00	7.00	9.00	11.00	.50	
1/4** 3/8" 1/2" 5/8"	1.50	3.00	2	A	.50	2.50					.75	
		4.00	2	A	1.00	3.00					.75	
		5.00	3	A	.50	2.50	4.50				.75	
		6.00	3	A	1.00	3.00	5.00				.75	
		8.00	4	A	1.00	3.00	5.00	7.00			.75	
		10.00	5	A	1.00	3.00	5.00	7.00	9.00		.75	
	2.00	3.00	2	A	.50	2.50					1.00	
		4.00	2	A	1.00	3.00					1.00	
		5.00	3	A	.50	2.50	4.50				1.00	
		6.00	3	A	1.00	3.00	5.00				1.00	
		8.00	4	A	1.00	3.00	5.00	7.00			1.00	
		10.00	5	A	1.00	3.00	5.00	7.00	9.00		1.00	
	2.50	3.00	2	A	.50	2.50					1.25	
		4.00	2	A	1.00	3.00					1.25	
		5.00	3	A	.50	2.50	4.50				1.25	
		6.00	3	A	1.00	3.00	5.00				1.25	
		8.00	4	A	1.00	3.00	5.00	7.00			1.25	
		10.00	5	A	1.00	3.00	5.00	7.00	9.00		1.25	
	3.00	3.00	4	B	.50	2.50					.50	2.50
		4.00	4	B	1.00	3.00					.50	2.50
		5.00	4	B	.50	4.50					.50	2.50
		6.00	4	B	1.00	5.00					.50	2.50
		8.00	6	C	1.00	3.00	5.00		7.00		.50	2.50
		10.00	6	B	1.00	5.00	9.00				.50	2.50
4.00	3.00	8	C	1.00	3.00	5.00	7.00	9.00	11.00	.50	2.50	
	4.00	4	B	1.00	3.00					1.00	3.00	
	5.00	4	B	.50	4.50					1.00	3.00	
	6.00	4	B	1.00	5.00					1.00	3.00	
	8.00	6	C	1.00	3.00	5.00		7.00		1.00	3.00	
	10.00	6	B	1.00	5.00	9.00				1.00	3.00	
5/8"	3.00	8	C	1.00	3.00	5.00	7.00	9.00	11.00	1.00	3.00	
	4.00	8	C	1.00	3.00	5.00	7.00	9.00	11.00	1.00	3.00	

**Ordering Note:** Order by catalog number using the scheme above. If special features or a non-standard hole pattern is required, order by your job and detail number and send a print or CAD model.